



ICD Newsletter
Issue 6 – March 2010
Page 1

ICD releases ModBus Slave client!



ICD provides an IOserver for communication with PLC automation systems and components requiring the ModBus Slave protocol.

MODBUS Slave Technical Facts and Features:

- Supports Several Slave ID's in one IOserver
- Supports several Addresses on one SlaveID
- Supports Digital and Analog signals intermixed
- Supports an unlimited amount of addresses (limited only by memory available)
- Supports setting access-rights on address-ranges
- Supports setting routing on each Channel.
- Supports the following MODBUS function codes:
 - Function code 0x03 (Read Holding Registers)
 - Function code 0x10 (Write Multiple Registers)
 - Function code 0x17 (Read Write Multiple Registers)
- Supports the TCP and UDP transport layer

Free trial license - download the software from our website www.icd.no

Spring offer:

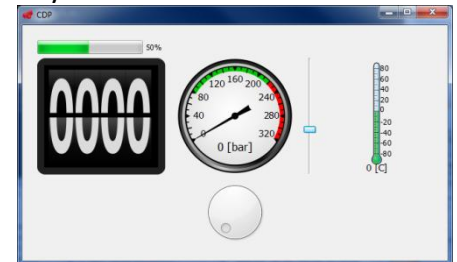
FREE

5 hour consultation and development work for each of the first 10 new licenses sold to new customers

(CDPCore license and two addons or IOservers, march and April)

INEXPENSIVE PLS GUI

Fed up with having to buy special hardware and software for each of your PLS installations?



Use CDP gui, a tool for simple and inexpensive generation of graphic user interfaces for PLC automation systems.

Use drag-and-drop of ready graphic objects – widgets – to create a user interface in a matter of minutes.

Communicate with a host of different automation controllers through the use of standard protocols.

Deploy your finished graphical user interface on commercial off the shelf (COTS) hardware at affordable prices.

No run-time fees for your GUIs

Use other CDP components to expand your GUIs functionality, such as logging or integration

Use other widgets from Nokia Qt in your control system GUI – integrate voice, video or internet with your PLC control system

Available for download, contact us by mail. Remember, we offer free support to all license holders.