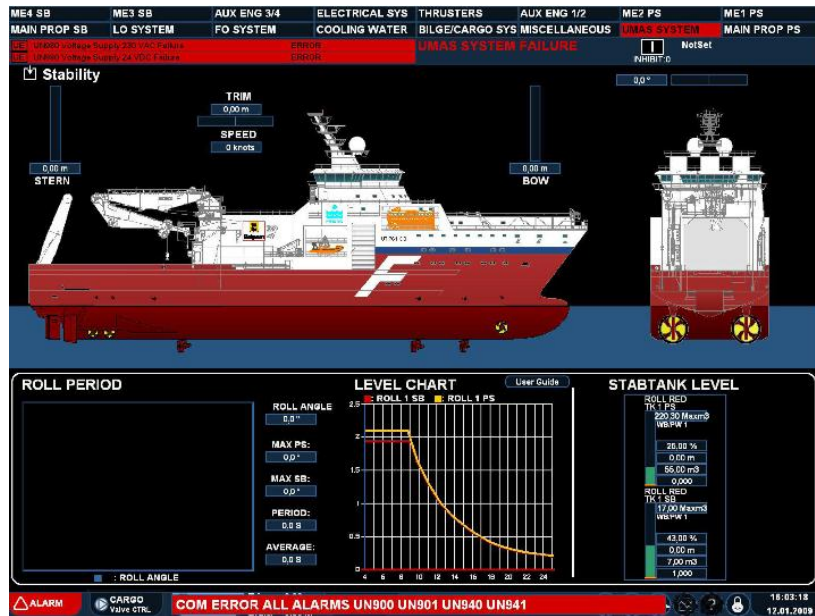




Rolls-Royce Marine AS with CDP as all-encompassing control system platform



Rolls-Royce Marine delivers systems to a multitude of advanced vessels. This includes control system for navigation, propulsion, handling, maneuvering, tank leveling, anti-roll systems and more. All control systems are CDP-based.

CDP is used as the platform for all systems. This ensure that control system integration is very easy, since signals from CDP-based systems are available throughout the network and signals from external equipment can easily be integrated by using some of the many protocols supported by CDP.

CDP is currently the basis for somewhat above 1500 control systems delivered by Rolls-Royce Marine alone. Many of these systems have been in operation for many years, running on rugged but affordable hardware. CDP systems do not require any special hardware and can use ordinary network cables or a multitude of industrial bus systems.

The control system has numerous safety features, such as redundancy, event logging and communication with vessel subsystems. By reusing components Rolls-Royce Marine can deploy a new configuration of prequalified software components. Setting up a complete alarm system for a large and complicated vessel is now done in a matter of a few days.

Rolls-Royce Marine DP1 and DP2 (dynamic positioning) systems are safety-critical, able to keep the vessels stationary at a few meters interval while servicing oil installations even in adverse weather conditions. Rolls-Royce Marine relies heavily on the communication platform and safety functions of the CDP software. According to their own statement, delivering their systems would not be possible without the supporting subsystems of the CDP software.

For further information, please contact:

Industrial Control Design AS
Tel. +47 9307 3230, e-mail: [bh \(at\) icd.no](mailto:bh@icd.no) or see www.icd.no